

# PLASTER SEPARATOR / -TRAP

Item No. | 10001

with sealed, 4-chamber clarification system

> no unpleasant odors > no spillage > easy to clean

Transparent container with plastic sheet inlay and snap-shut locking system. Transparency of plaster separator enables visual monitoring of sludge. Plastic bag inlay ensures easy and rapid cleaning.

**European-Patent No. 2627426**

## TECHNICAL DATA

Height, diameter:	320 mm, 340 mm
Discharge height:	245 mm
Discharge connector:	Ø 50 mm
Capacity:	14 l
Inlet connection:	1 1/2", Ø 28 mm
Weight:	2,1 kg



Position inlet in the upper chamber.



For cleaning detach the connection of the drain, unscrew closure cap, remove the remaining water with our drawing and pull out the insert.



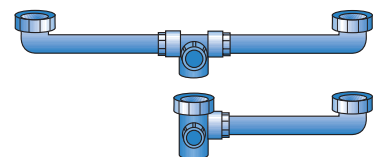
Remove drain adapter.



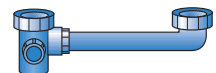
Bind the foil inlay under the outlet opening and remove. Temperature max. 80°C

**20004** | Replacement inlay plastic bags, set of 25, for plaster separator / -trap (image not shown)

**20202** | Discharge connector for double sink 120 mm – 600 mm / 1 1/2"



**60086** | Discharge connector for double sink 80 mm – 300 mm / 1 1/2"



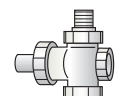
**70073** | Plaster separator supply pipe, straight, 1 1/2"



**70074** | Plaster separator supply pipe, 90°, 1 1/2"



**90027** | T-connector for double water supply



**70115** | Flexible discharge hose, L: 1,000 mm, Ø 50 mm, Conn.: 40/50 mm



**70125** | Flexible discharge hose, L: 750 mm, Ø 50 mm, Conn.: 40/50 mm



**70124** | Flexible discharge hose, L: 500 mm, Ø 50 mm, Conn.: 40/50 mm



# CONDITIONING UNIT

for waste water containing gypsum plaster



Waste water containing gypsum plaster can be easily conditioned at all work stations in order to retain

the dissolved gypsum. Our metering devices guarantee an easy, effective, and practical application.

## IR-METERING DEVICE with infrared sensor for sink basins

Item No. | 20153

### TECHNICAL DATA

Height: 120 mm, Width: 70 mm, Depth: 100 mm

Elec. parameters: 230 V / 50 Hz

Weight: 500 g

Sensor range adjustable from 0 - 600 mm



## TR-METERING DEVICE for metering with joint gypsum trimmer

Item No. | 20151

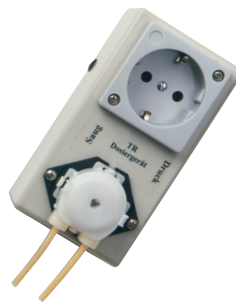
### TECHNICAL DATA

Height: 120 mm, Width: 70 mm, Depth: 100 mm

Elec. parameters: 230 V / 50 Hz

Load: min. 300 W - max. 3.000 W

Weight: 500 g



## DENTAFLOC

When using Dentafloc, the fallout of gypsum silt in separators is greatly accelerated. Cleaning becomes much easier.

20154 | **Dentafloc** 5 liters

20161 | **Dentafloc** 10 liters



## Clots, coagulates and odour free

DentaFlocTabs eliminates 99% of all bacteria and therefore no unpleasant odours occur. The flocculent properties in the DentaFlocTab means over 90% of gypsum are embedded and settled in the plaster separator.

The dispensing basket with the DentaFlocTab needs to be hung in the highest chamber of the plaster separator. At least once a week put a new DentaFlocTab in the dispensing basket, this will prevent odour and maintain efficient coagulation of the plaster.

### PACKAGING UNIT

Art.-Nr. 21002 10 pieces

Art.-Nr. 21003 25 pieces



Tlfnos 952 28 78 71 / 07 08 22  
606 95 06 49

29620 MALAGA / 28039 MADRID

Email: [info@dentalraces.com](mailto:info@dentalraces.com)  
[www.dentalraces.com](http://www.dentalraces.com)

# WATER EXHAUST PUMP

Item No. | 10027

## for plaster separator

**The practical complement to the plaster separator for the uncomplicated and quick removal of the residual water.**

Remove the cover of the plaster separator. Submerge the pumping tube into the residual water and hang the flexible hose into a separate container. The up and down movement of the pump lever easily and effectively drains the water through the pump, via the hose, to the separate container. The plaster is disposed of in the usual manner.

### TECHNICAL DATA

Overall length:	530 mm
Stroke length:	135 mm
Displacement volume:	100 ml/stroke

Aluminium design

Utility Model No. 2020110014673  
Community Design No. 001804931-0001



# EXTRACTOR

Item No. | 20192

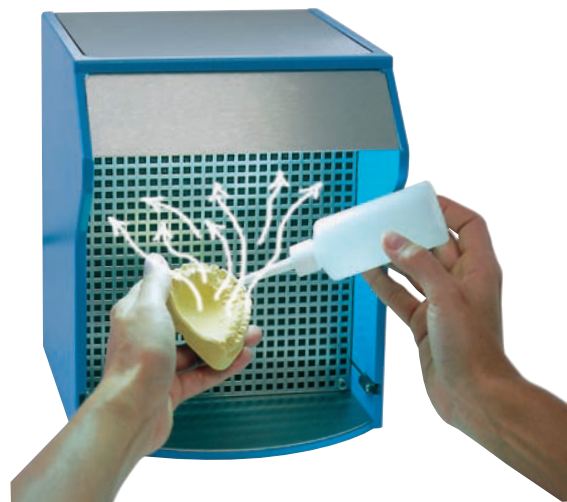
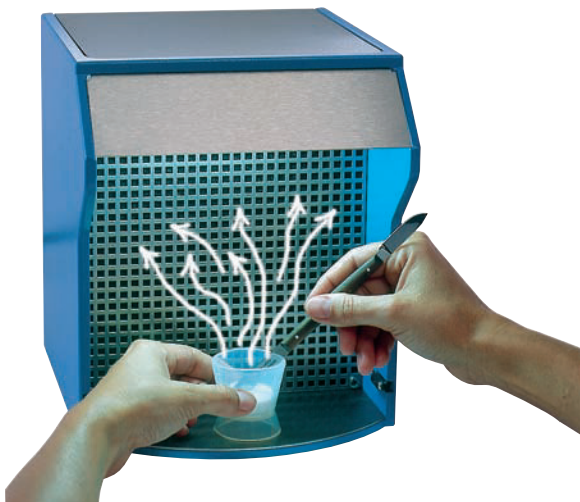
with activated charcoal filter

› protects against hazardous vapors

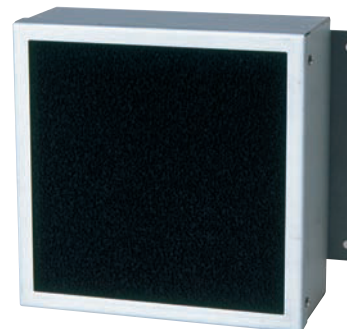
Right from the start you will be able to avoid the health risks of hazardous vapors. This user-friendly exhaust system allows you to target the ever-increasing risks from chemical substances. The degree of separation for insulation fluid is 84%, for Monomer 89%, if the exhaust system is used with the activated charcoal filter, and if the filter is regularly replaced after approx. 50 operating hours. A light sensor automatically turns on the system during countertop operation. Upon completion of the work process, the system will turn off with some time delay.

## TECHNICAL DATA

Height:	260 mm
Width:	220 mm
Depth:	260 mm
Elec. parameters:	230 V / 50 Hz, 100 W
Weight:	6 kg



20206 | Filter cartridge for Extractor (new)



# DISINFECTION TUBS

> with mesh bottom, drip pan and lid

Disinfection tubs made of plastic for disinfection of instruments or moldings. Bath is equipped with a mesh bottom for disinfection items, a drip pan, and a lid.

## TECHNICAL DATA

Height:	120 mm
Width:	340 mm
Depth:	210 mm
Filling volume:	4 Liter
Weight:	1 kg

## DISINFECTION TUB with transparent lid

Item No. | 10039



## DISINFECTION TUB with white lid

Item No. | 10040

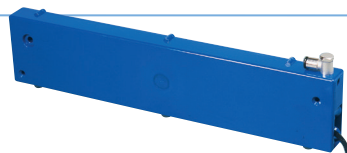
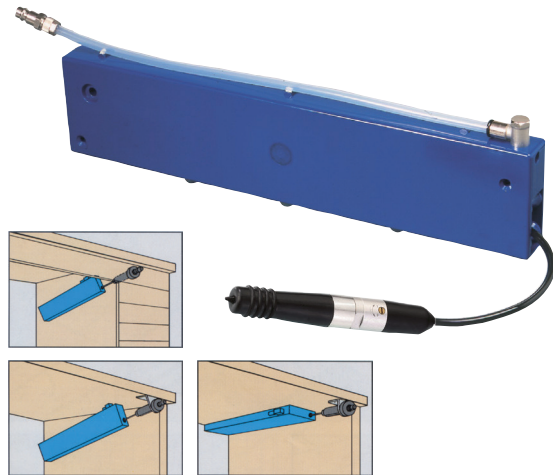


## AIR HOSE RETURN DEVICE with 6/3 mm hose, air blower silent with air adjustment valve, connector hose and air socket

Art.-Nr. | 20148/20238

Space-saving, gentle tube routing with definitive estop (no pull) during use. Compact unit, for installation anywhere.

TECHNICAL DATA	20148	/	20238
Height: 90 mm, Depth: 30 mm			
Length:	420 mm	/	470 mm
Tube extension:	550 mm	/	690 mm
Connector:	8/6 mm	/	8/6 mm
Discharge:	6/3 mm	/	6/3 mm
Weight:	700 g	/	750 g



**20144** | Air hose return device with 6/3 mm hose 420 mm

**20237** | Air hose return device with 6/3 mm hose 470 mm



**70102** | Holder straight for fitted air blower (drill hole  $\varnothing$  33 mm)

**70034** | Holder slanted 30° for fitted air blower (drill hole  $\varnothing$  33 mm)

**70110** | Holder straight for air blower, for sub-structure assembly

**70111** | Holder slanted 30° for air blower, for sub-structure assembly



**50045** | Air blower silent with connector for 4/3 mm hose

**50075** | Air blower silent with connector for 6/4 mm hose and 6/3 mm hose

**50059** | Air blower silent with connector for 8/6 mm hose

**50132** | Air blower with connector 6/4 mm and 6/3 mm hose

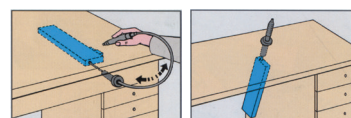
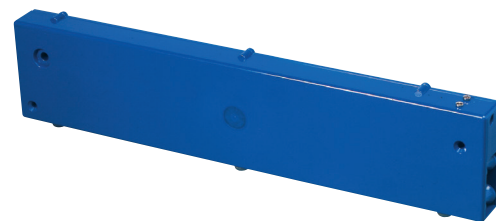
**50063** | Air blower with connector 8/6 mm

## RETURN DEVICE for handpiece cable

Item No. | 20178/20239

A space saving gentle tube guidance with definitive stop (no pulling) during use. Compact unit, for installation anywhere.

TECHNICAL DATA	20178	/	20239
Height: 90 mm, Depth: 30 mm			
Length:	420 mm	/	470 mm
Tube extension:	550 mm	/	690 mm
Weight:	500 g	/	550 g



**70113** | Holder for handpiece  $\varnothing$  28 mm (drill hole  $\varnothing$  37 mm)

**70116** | Holder for handpiece  $\varnothing$  30 mm (drill hole  $\varnothing$  37 mm)

**70112** | Holder for handpiece  $\varnothing$  32 mm (drill hole  $\varnothing$  37 mm)

# GAS FITTINGS AND GAS TUBES

for laboratory tables

Item No. | 30161

## Gas angle tap

Feed/discharge with  
hose nipple  $\varnothing$  10 mm  
Fitting dimension:  $\varnothing$  21 mm  
Length: 45 mm



Item No. | 30172

## Gas angle tap

Feed with  
gas hose 1000 mm  
Connection 1/2"  
Discharge  
Nipple discharge  $\varnothing$  10 mm  
Fitting dimension:  $\varnothing$  21 mm  
Length: 45 mm



Item No. | 30171

## Gas armature

Feed/discharge with  
hose nipple  $\varnothing$  10 mm  
Fitting dimension:  $\varnothing$  40 mm  
Length: 30 mm



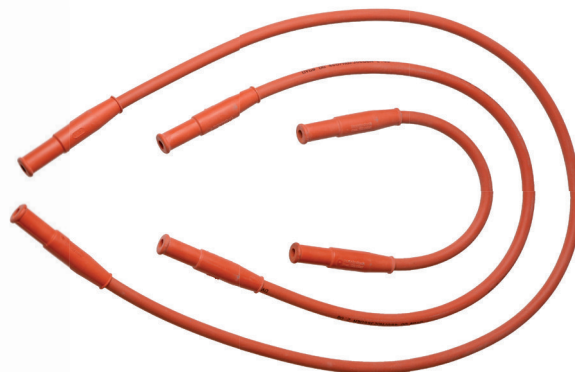
## Safety gas hose

Diameter 18/10 mm, operating pressure up to 100 mbar

Length 500 mm, DIN 30665 [Item No. | 30162](#)

Length 1000 mm, DIN 30665 [Item No. | 30060](#)

Length 1500 mm, DIN 30665 [Item No. | 30163](#)



Item No. | 30169

## Gas armature

Feed/discharge with  
gas hose 1000 mm  
Connection 1/2"  
Fitting dimension:  
 $\varnothing$  40 mm  
Length: 30 mm



Item No. | 30160

## Gas hose

Diameter 14/10 mm,  
Operating pressure up to 100 mbar,  
DIN 30664 for Bunsen burners  
per meter available



Item No. | 30170

## Gas armature

Feed with  
gas hose 1000 mm  
Connection 1/2"  
Discharge  
Nipple discharge  $\varnothing$  10 mm  
Fitting dimension:  $\varnothing$  40 mm  
Length: 30 mm





**To clean small parts, dental work and instruments, as well as for occasional use in large objects.**

Fats, waxes, adhesives, mordant, dirt and adhesions are removed gently and thoroughly.

The steam cleaner DR-1 operates environmentally friendly with no chemical additives.

Automatic filling regulates uninterrupted workflow.

- Automatic filling
- Steam dosed continuously
- Operation via footswitch
- Boiler pressure gauge

## TECHNICAL DATA

Height:	41 cm
Width:	50 cm
Depth:	21 cm
Electrical values:	230 V / 50 Hz / 2 kW
Hose connection:	3/4"
Weight:	27 kg



# EXTRACTION CABINET

with light, ventilation and electrical outlets

People's safety at work today is more important than ever. More and more substances have been recognized as health hazardous. Therefore, contact with dangerous work materials should be avoided. Dental laboratories pose many harmful substances when inhaled or exposed to as vapors. For example, these include acid and galvanization baths (silver, copper, gold)

and ultrasonic solution baths. In case of noise-producing machines, hearing protection shall require enclosure of the noise source. Our exhaust cabinet offers a simple and secure solution to these problems within your company.

## EXTRACTION CABINET without rinsing basin

Item No. | 10032

### TECHNICAL DATA

Height: 1.000 mm, Width: 1.000 mm, Depth: 500 mm

Voltage: 230 V / 50 Hz / 180 W

Extraction volume: 430 m<sup>3</sup> / h

Pressure stat. (max): 340 Pa



## EXTRACTION CABINET with rinsing basin

Item No. | 10022

### TECHNICAL DATA

Height: 1.000 mm, Width: 1.000 mm, Depth: 500 mm

Voltage: 230 V / 50 Hz / 180 W

Extraction volume: 430 m<sup>3</sup> / h

Pressure stat. (max): 340 Pa

Water connection: 3/4 "

Water discharge: 22 mm ø



20098 | **Sub-frame** for extraction cabinet, made of anodized aluminium profile

# TR-BOX MINI

Item No. | 20218

## Transportation and storage box for models and work documents

- › suitable for all transportation needs
- › stackable › robust › lightweight

available in the following colors:

**light grey**      **RAL 7035**

**anthracite**     **RAL 7016**

20243 | Insert for 6 Models

20223 | Lid padding

20244 | Floorpadding



### TECHNICAL DATA

Width: 265 mm

Depth: 171 mm

Height: 71 mm

Weight: 0,45 kg



# TR-BOX

## Transportation and storage box

### for articulator, face-bow, models and work documents

- › variable inner division
- › The container is suitable for all transport demands
- › stackable › robust › lightweight

available in: **skyblue RAL 5015**

#### TECHNICAL DATA

Width:	395 mm
Depth:	295 mm
Height:	210 mm
Weight:	2 kg



#### 10034 | TR-Box

Articulator - Face-bow



#### 10035 | TR-Box

Articulator - Articulator



#### 10036 | TR-Box

Articulator - empty compartment



#### 10037 | TR-Box

empty compartment - Face-bow insert



#### 10038 | TR-Box

empty compartment - empty compartment



#### 20212 | TR-Box

without contents



## ACCESSORIES

20207 | Face-bow insert

20208 | Articulator insert left

20209 | Articulator insert right

20210 | Empty compartment right

20211 | Empty compartment left

20213 | Cover for face-bow

20214 | Lid padding for TR-Box

20215 | Floor padding for TR-Box

# TR-BOX

Item No. I 20235

## Transport and storage box for articulators

> lightweight > lockable

Aluminium design

### TECHNICAL DATA

Width: 255 mm

Depth: 215 mm

Height: 150 mm

Weight: 1,6 kg



# WATER CONTROL SYSTEM WITH LIMIT SWITCH

## for cold water

Use the advantages of this technology, to reduce unnecessary water consumption and to keep your hands free for more important tasks. Existing taps can be reequipped with the water control system.

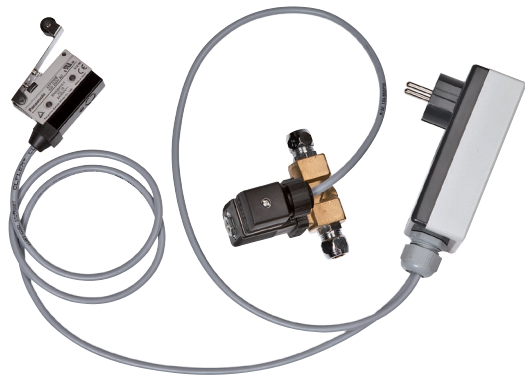
Art.-No. | 10048

### TECHNICAL DATA

Solenoid valve connections:  $\varnothing$  10 mm

Electrical values: 230 V / 50 Hz / 8 W

Weight: 1,0 kg



# WATER CONTROL SYSTEM WITH LIMIT SWITCH

## for hot and cold water

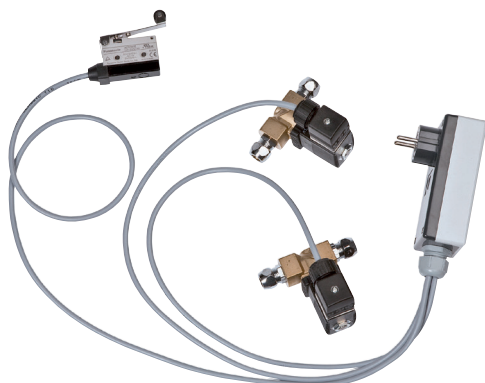
Art.-No. | 10047

### TECHNICAL DATA

Solenoid valve connections:  $\varnothing$  10 mm

Electrical values: 230 V / 50 Hz / 16 W

Weight: 1,5 kg



# CONTACTLESS WATER CONTROL SYSTEM

## Foot-operated water control system

### for comfortable tapping

Make use of advantages of this technology, to control needless water consumption and to have your hands free for other things. The water control system can be fitted to existing water taps at any time.

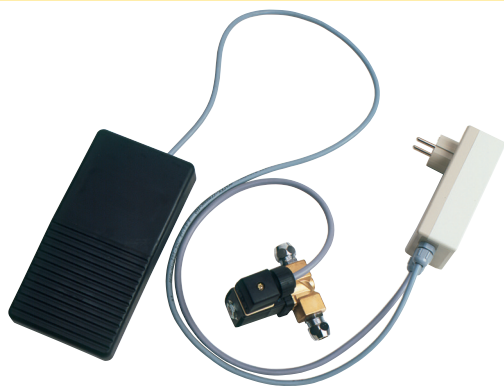
## FOOT-OPERATED WATER CONTROL SYSTEM

### For cold water

Item No. | 10028

#### TECHNICAL DATA

Magnetic valve connector:	ø 10 mm
Electrical values:	230 V / 50 Hz / 8 W
Weight:	1 kg



## FOOT-OPERATED WATER CONTROL SYSTEM

### For cold and warm water

Item No. | 10026

#### TECHNICAL DATA

Magnetic valve connector:	ø 10 mm
Electrical values:	230 V / 50 Hz / 16 W
Weight:	1,5 kg



# CONTACTLESS WATER CONTROL SYSTEM

## Sensor water control system for comfortable tapping

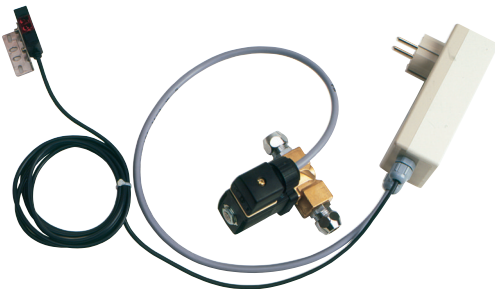
Make use of advantages of this technology, to control needless water consumption and to have your hands free for other things. The water control system can be fitted to existing water taps at any time.

### SENSOR WATER CONTROL SYSTEM for cold water

Item No. | 20177

#### TECHNICAL DATA

Magnetic valve connector:	∅ 10 mm
Electrical values:	230 V / 50 Hz / 8 W
Sensor range:	0 - 600 mm
Weight:	0,8 kg



### SENSOR WATER CONTROL SYSTEM for cold and warm water

Item No. | 20179

#### TECHNICAL DATA

Magnetic valve connector:	∅ 10 mm
Electrical values:	230 V / 50 Hz / 16 W
Sensor range:	0 - 600 mm
Weight:	1,5 kg





# DUST/SAND PRE-SEPARATOR

Item No. | 20204

transparent container

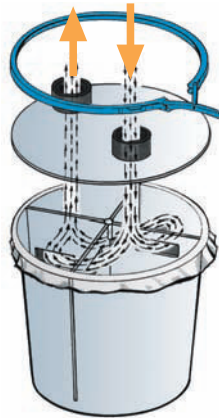
with plastic sheet inlay and snap-shut locking system

The pre-separator may be incorporated in any exhaust system, independent of the substance to be extracted. By using several pre-separators, it is possible to retain and dispose of various types of substances (sand, plaster) separately. **Inclusion of a pre-separator in your exhaust system will considerably increase the operating life of your filter.**



## TECHNICAL DATA

Height	350 mm
Diameter	340 mm
Fittings	Ø 22 - 56 mm
Weight	2 kg



Connect hose from dust/sand pre-separator to top chamber.

1



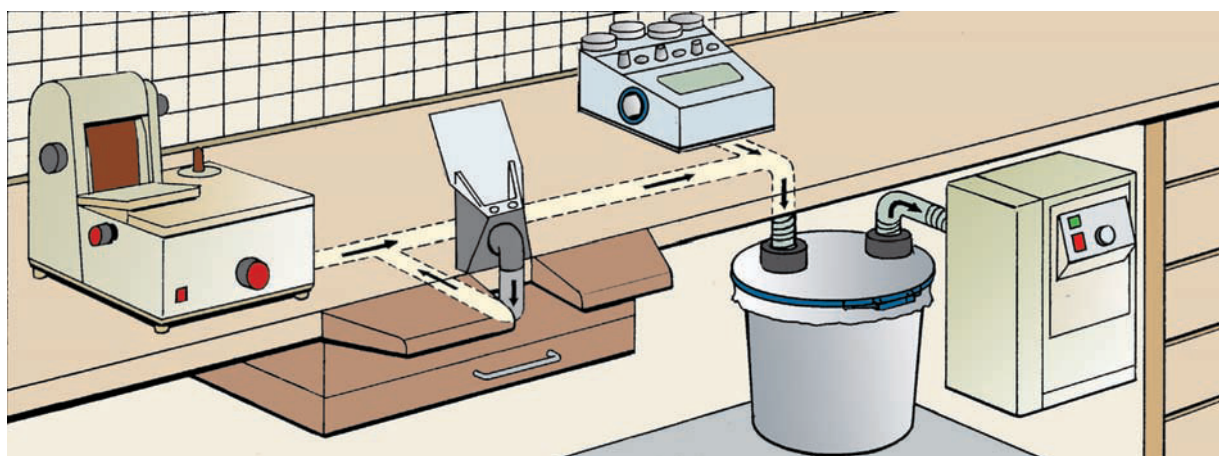
Remove separator insert.

2



Securely tie plastic bag and discharge.

3



## ACCESSORIES

20004 | Replacement bags, set of 25, for dust/sand pre-separator (image not shown)

# STAINLESS STEEL CARE SET

Item No. | 20008

## BREGLIT

Stainless steel liquid care product (1000 ml)



A special BDT product for use in dental laboratories on all stainless steel surfaces. Fingerprints, marks, stains, and tarnishes disappear after treatment. The protective film prevents quick deposits of gypsum, lime, etc.

Item No. | 20001

## BREGLIT

Stainless steel care product (400 ml)



A special BDT product for use in dental laboratories on all stainless steel surfaces. Fingerprints, marks, stains, and tarnishes disappear after treatment. The protective film prevents quick deposits of gypsum, lime, etc.

Item No. | 20013

## BREGLIT

Stainless steel basic cleanser (500 ml)



The liquid scouring agent removes stubborn dirt and stains on all stainless steel surfaces gently, yet thoroughly.

Item No. | 20076

## LIMESTONE REMOVAL AGENT

(500 ml)



Antibacterial, bio-degradable

# POLYMERIZATION BATHS

## for 2 cuvettes

### IVO-2

Stainless steel bath, electronic water level control, micro-chronometer, continuous temperature control, built-in air sockets, indirect heating (no limestone deposits on heating elements).

#### TECHNICAL DATA

Height: 300 mm, Width: 350 mm, Depth: 470 mm

Elec. parameters: 230 V / 50 Hz, 1,5 kW

Air pressure: 6 bar

Hose connection: 3/4 "

Discharge hose: 22 mm ø

Weight: 12 kg

Item No. | 10002



### IVO-2 special

Stainless steel bath, electronic water level control, continuous temperature control, indirect heating (no limestone deposits on heating elements).

#### TECHNICAL DATA

Height: 260 mm, Width: 350 mm, Depth: 360 mm

Elec. parameters: 230 V / 50 Hz, 1,5 kW

Hose connection: 3/4 "

Discharge hose: 22 mm ø

Weight: 8 kg

Item No. | 10004



### IVO-2 manual

Stainless steel bath, continuous temperature control, indirect heating (no limestone deposits on heating elements)

#### TECHNICAL DATA

Height: 260 mm, Width: 350 mm, Depth: 360 mm

Elec. parameters: 230 V / 50 Hz, 1,5 kW

Discharge hose: 22 mm ø

Weight: 6,5 kg

Item No. | 10005



# POLYMERIZATION BATHS

for 4 cuvettes

## IVO-4

Stainless steel bath, electronic water level control, micro-chronometer, continuous temperature control, built-in air sockets, indirect heating (no limestone deposits on heating elements).

### TECHNICAL DATA

Height: 300 mm, Width: 530 mm, Depth: 470 mm

Elec. parameters: 230 V / 50 Hz, 2,5 kW

Air pressure: 6 bar

Hose connection: 3/4 "

Discharge hose: 22 mm  $\emptyset$

Weight: 14 kg

Item No. | 10003



## IVO-4 special

Stainless steel bath, electronic water level control, continuous temperature control, indirect heating (no limestone deposits on heating elements).

### TECHNICAL DATA

Height: 260 mm, Width: 530 mm, Depth: 360 mm

Elec. parameters: 230 V / 50 Hz, 2,5 kW

Hose connection: 3/4 "

Discharge hose: 22 mm  $\emptyset$

Weight: 9,5 kg

Item No. | 10033



## IVO-4 manual

Stainless steel bath, continuous temperature control, indirect heating (no limestone deposits on heating elements).

### TECHNICAL DATA

Height: 260 mm, Width: 530 mm, Depth: 360 mm

Elec. parameters: 230 V / 50 Hz, 2,5 kW

Discharge hose: 22 mm  $\emptyset$

Weight: 9 kg

Item No. | 10006



# COOLING BATHS

## COOLING BATH KW 2 for 2 cuvettes

Item No. | 10017

The cooling baths may be connected directly to the cold water supply or refrigeration unit.

### TECHNICAL DATA

Height:	260 mm
Width:	350 mm
Depth:	360 mm
Hose connection:	3/4 "
Discharge hose:	22 mm ø
Weight:	5,5 kg



## COOLING BATH KW 4 for 4 cuvettes

Item No. | 10016

The cooling baths may be connected directly to the cold water supply or refrigeration unit.

### TECHNICAL DATA

Height:	260 mm
Width:	530 mm
Depth:	360 mm
Hose connection:	3/4 "
Discharge hose:	22 mm ø
Weight:	7 kg



# SR-IVOCAP ACCESSORIES

**20006 | Spring washers for SR-IVOCAP clamping frame**

1 set of 12 pieces  
Regular checking and replacement of spring washers will guarantee uniform work results



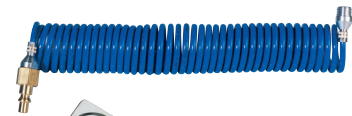
**20005 | Floating balls**

ø 20 mm, 1.000 pieces



**20086 | Spiral hose**

with connector for SR-IVOCAP cylinder



**20146 | Stainless steel lid**

für IVO 2, IVO 2 special, IVO 2 manual



**20116 | Stainless steel lid**

für IVO 4, IVO 4 special, IVO 4 manual

**20075 | Rubber gloves**

1 pair of heat resistant gloves



**20003 | Dur-Fix Hardener** (image not shown)

bag with 200 g, 10 % volume discount for 50 bags

**20037 | Wall holder for 2 SR-IVOCAP cylinders**

**20073 | Stand holder for 2 SR-IVOCAP cylinders**

**20106 | Wall holder for 2 SR-IVOCAP cylinders with 3 air sockets**

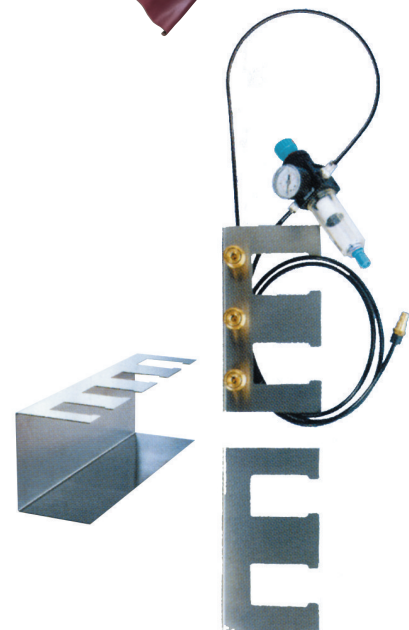
**20197 | Stand holder for 2 SR-IVOCAP cylinders with 3 air sockets**

**20038 | Wall holder for 4 SR-IVOCAP cylinders**

**20039 | Stand holder for 4 SR-IVOCAP cylinders**

**20107 | Wall holder for 4 SR-IVOCAP cylinders with 6 air sockets**

**20074 | Stand holder for 4 SR-IVOCAP cylinders with 6 air sockets**



# PRICE LIST BDT GmbH

01/2017

Art.No.	Product	Price / €
10001	<b>Plaster separator</b> with sealed, 4-chamber clarification system	224,60
	<b>Plaster separator accessories</b>	
20004	Replacement inlay plastic bags for plaster separator, set of 25 pieces	14,60
20202	Discharge connector for double sink, length: 120 mm - 600 mm , 1 1/2"	24,30
60086	Discharge connector, length: 80 mm - 300 mm , 1 1/2"	12,70
70073	Plaster separator supply pipe, straight, length: 500 mm, 1 1/2"	14,50
70074	Plaster separator supply pipe, 90°, 1 1/2"	18,10
90027	T-connector for double water supply	18,20
70115	Flexible discharge hose, missing 40/50 mm, <b>length: 1000 mm</b>	44,80
70125	Flexible discharge hose, missing 40/50 mm, <b>length: 750 mm</b>	31,50
70124	Flexible discharge hose, missing 40/50 mm, <b>length: 500 mm</b>	24,30
	<b>DentaFlocTabs</b>	
21002	DentaFlocTabs, packing unit of 10 pcs.	24,80
21003	DentaFlocTabs, packing unit of 25 pcs.	59,30
	<b>Conditioning unit for waste water containing gypsum plaster</b>	
20153	IR-Metering Device with infrared sensor for sink basins	537,70
20151	TR-Metering Device for metering with joint gypsum trimmer	401,70
20154	Dentafloc liquid, 5 liters	44,30
20161	Dentafloc liquid, 10 liters	81,40
10027	<b>Water exhaust pump</b> for plaster separator	100,00
20192	<b>Extractor with activated charcoal filter</b>	912,00
20206	Filter cartridge for Extractor (new)	49,50
	After returning the used filter cartridge, you will receive a credit.	

THE ABOVE PRICES DO NOT INCLUDE. VAT AND DELIVERY OF EACH APPLICABLE FACTORY OFFEBURG

# PRICE LIST

01/2017

Art.No.	Product	Price / €
20148	<b>Air hose return device</b> with 6/3 mm hose, length: 420 mm air blower silent with air adjustment valve, connector hose and air socket	133,50
20144	<b>Air hose return device</b> with 6/3 mm hose, length: 420 mm	93,80
20238	<b>Air hose return device <u>long version</u></b> with 6/3 mm hose, length: 490 mm air blower silent with air adjustment valve, connector hose and air socket	151,60
20237	<b>Air hose return device <u>long version</u></b> with 6/3 mm hose, length: 490 mm	110,80
70102	Holder <b>straight for fitted</b> air blower (drill hole Ø 33 mm)	7,40
70034	Holder <b>slanted 30 ° for fitted</b> air blower (drill hole Ø 33 mm)	8,70
70110	Holder <b>straight</b> for air blower <b>for substructure</b> assembly	8,70
70111	Holder <b>slanted 30 °</b> for air blower <b>for substructure</b> assembly	8,70
50045	Air blower silent with regulation for hose 4/3 mm	38,50
50075	Air blower silent with regulation for hose 6/3-4 mm	38,50
50059	Air blower silent with regulation for hose 8/6 mm	38,50
50132	Air blower with regulation for hose 8/6 mm	36,50
50063	Air blower with regulation for hose 6/3-4 mm	36,50
20178	<b>Return device for handpiece cable</b> , length: 420 mm	76,30
20239	<b>Return device for handpiece cable, <u>long version</u></b> length: 490 mm	89,70
70113	Holder for hand piece Ø 28 mm (drill hole Ø 37 mm)	16,10
70116	Holder for hand piece Ø 30 mm (drill hole Ø 37 mm)	16,10
70112	Holder for hand piece Ø 32 mm (drill hole Ø 37 mm)	16,10
<b>Gas armature and gas hose</b>		
30161	Gas angle tap with access/conduction hose nipple Ø 10 mm (drill hole Ø 21 mm)	152,50
30172	Gas angle tap with gas hose 1000 mm, connection 1/2" conduction hose nipple Ø 10 mm (drill hole Ø 21 mm)	178,80
30171	Gas armature with 2 hose nipple Ø 10 mm	179,80
30170	Gas armature with 1 gas hose 1000 mm, connection 1/2" and 1 hose nipple Ø 10 mm	208,10
30169	Gas armature with 2 gas hoses 1000 mm, connection 1/2"	236,40
30162	Safety gas hose <b>L: 500 mm</b> DIN 30665, Ø 18/10 mm, operating pressure up to 100 mbar	45,40
30060	Safety gas hose <b>L: 1000 mm</b> DIN 30665, Ø 18/10 mm, operating pressure up to 100 mbar	60,80
30163	Safety gas hose <b>L: 1500 mm</b> DIN 30665, Ø 18/10 mm, operating pressure up to 100 mbar	73,70
30160	Gas hose DIN 30664, Ø 14/10 mm, operating pressure up to 100 mbar ( <b>per meter</b> )	13,60

THE ABOVE PRICES DO NOT INCLUDE. VAT AND DELIVERY OF EACH APPLICABLE FACTORY OFFEBURG



# PRICE LIST

01/2017

Art.No.	Product	Price / €
20218	<b>TR - Box <i>mini</i> for 6 models</b> inclusive foamed material W: 265 mm D: 171 mm H: 71 mm, light grey RAL 7035, anthracite RAL 7016	32,50
20243	Insert	8,10
20223	Lid padding	5,60
20244	Floor padding	3,30
<b>TR - Box Transport- and storage box</b>		
W: 395 mm D: 295 mm H: 210 mm		
10034	TR - Box Artikulator - Facemask insert	161,80
10035	TR - Box Artikulator - Articulator insert	161,80
10036	TR - Box Artikulator - Empty insert	161,80
10037	TR - Box Empty insert - Facemask insert	161,80
10038	TR - Box Empty insert - Empty insert	161,80
20212	TR - Box <b>without contents</b>	93,80
<b>Accessories for TR - Box</b>		
20207	Facemask insert	31,20
20208	Articulator insert left	31,20
20209	Articulator insert right	31,20
20210	Empty insert right	34,50
20211	Empty insert left	34,50
20213	Facemask cover	6,00
20214	Lid padding for TR - Box	7,00
20215	Floor padding for TR - Box	7,90
20235	<b>TR - Box Transport- and storage box for articulator</b> W: 255 mm, D: 215 mm, H: 150 mm <b>aluminium version</b>	103,00

THE ABOVE PRICES DO NOT INCLUDE. VAT AND DELIVERY OF EACH APPLICABLE FACTORY OFFEBURG

# PRICE LIST

01/2017

Art.No.	Product	Price / €
<b>Extraction cabinets</b>		
10032	Extraction cabinet <b>without</b> rinsing basin, with lighting, ventilating fan and sockets	3290,90
10022	Extraction cabinet <b>with</b> rinsing basin, lighting, ventilating fan and sockets	3775,00
20098	Sub-frame for extraction cabinet made of anodized aluminium profile	577,90
<b>Contactless Water Control System</b>		
10028	<b>Foot-operated</b> water control system for <b>cold</b> water	242,10
10026	<b>Foot-operated</b> water control system for <b>cold and warm</b> water	330,70
20177	<b>Sensor</b> water control system for <b>cold</b> water	404,80
20179	<b>Sensor</b> water control system for <b>cold and warm</b> water	467,70
10048	Water control system <b>with limit swich</b> for <b>cold</b> water	242,10
10047	Water control system <b>with limit swich</b> for <b>cold and warm</b> water	330,70
<b>Dust- / Sand pre-separator</b>		
20204	<b>Dust- / Sand pre-separator</b>	195,70
20004	Replacement inlay, plastic bags, set of 25 for Dust-/sand pre-separator	14,60
<b>Stainless steel care products</b>		
20008	Breglit stainless steel liquid care product, 1000 ml in a spray bottle	21,40
20001	Breglit stainless steel care product, 400 ml aerosol can	11,20
20013	Breglit stainless steel basic cleanster, 500 ml bottle	8,10
20076	Limestone removal agent, 500 ml - bottle, anti-bacterial, bio-degradable	9,20
10013	<b>Steam cleaner DR-1</b>	2884,00
<b>Disinfection tubs</b>		
10039	Disinfection tub with <b>transparent</b> lid, filling volume: 4 liters	63,40
10040	Disinfection tub with <b>white</b> lid, filling volume: 4 liters	63,40

THE ABOVE PRICES DO NOT INCLUDE. VAT AND DELIVERY OF EACH APPLICABLE FACTORY OFFEBURG

# PRICE LIST

01/2017

Art.No.	Product	Price / €
<b>Polymerization bath</b>		
10002	Polymerization bath <b>IVO - 2</b>	1825,00
10004	Polymerization bath <b>IVO - 2 special</b>	1475,00
10005	Polymerization bath <b>IVO - 2 manual</b>	1125,00
10003	Polymerization bath <b>IVO - 4</b>	2075,00
10033	Polymerization bath <b>IVO - 4 special</b>	1725,00
10006	Polymerization bath <b>IVO - 4 manual</b>	1375,00
	Polymerization baths are available with 110 V	on application
<b>Cooling baths</b>		
10017	Cooling bath <b>KW - 2</b>	633,50
10016	Cooling bath <b>KW - 4</b>	721,00
<b>SR - IVOCAP System accessories</b>		
20006	Spring washers for SR - Ivocap clamping frame (1set = 12 pieces)	45,40
20005	Floating balls, Ø 20 mm, 1000 pieces	109,20
20086	Spiral hose with connector for SR - Ivocap - cylinder	37,10
20146	Stainless steel lid for IVO - 2, IVO - 2 special, IVO - 2 manual	69,10
20116	Stainless steel lid for IVO - 4, IVO - 4 special, IVO - 4 manual	128,80
20075	Rubber gloves, heat resistant, 1 pair	22,70
20003	Dur - Fix - Hardener, bag with 200 g, 10% volume discount for 50 bags	8,90
20037	Wall holder for 2 SR - Ivocap - cylinders	86,60
20073	Stand holder for 2 SR - Ivocap - cylinders	116,40
20106	Wall holder for 2 SR - Ivocap - cylinders with 3 air sockets	185,40
20197	Stand holder for 2 SR - Ivocap - cylinders with 3 air sockets	212,20
20038	Wall holder for 4 SR - Ivocap - cylinders	130,90
20039	Stand holder for 4 SR - Ivocap - cylinders	160,70
20107	Wall holder for 4 SR - Ivocap - cylinders with 6 air sockets	250,30
20074	Stand holder for 4 SR - Ivocap - cylinders with 6 air sockets	276,10



GRUPO DENTAL  
/ 606 95 06 49 fecha 21:38 , 13/11/2016